



Ecom Simple Meter Quick reference guide

Ecom Simple Meter is used to measure the blood glucose levels in people with diabetes.

IVD This device is an in vitro diagnostic medical device.



Do not use the meter for diagnosing diabetes.

- Do not change the treatment based on a single result which doesn't match how you feel or if you believe your test result is incorrect.
- If the test result does not match how you feel and you have followed the instruction in the User's Manual ,please consult your doctor.
- Please do not take a measurement near the mobile or the microwave oven, or it might lead to the incorrect result.

If you have any questions or concerns regarding this product, please contact us for assistance.

Customer service line: 886-2-2691-7605

EMAIL: info@comimed.com



EU Authorized Representative:

Company Name: GIC Medical U.K.

Address: Unit28 Kingspark Business Centre, 152-178 Kingston Road, New Malden, Surrey, KT3 3ST U.K.

Tel: 44-20-8605-0205

Fax: 44-20-8715-6602

Manufactured by

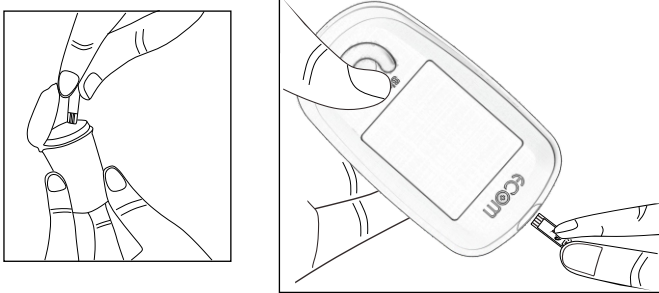
COMIMED BIOMEDICAL CO., LTD.

13F.-1, No.37, Sec. 2, Sanmin Rd., Banqiao Dist., New Taipei City 220, Taiwan (R.O.C.)



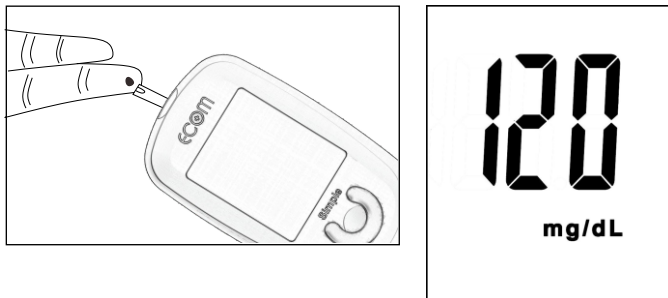
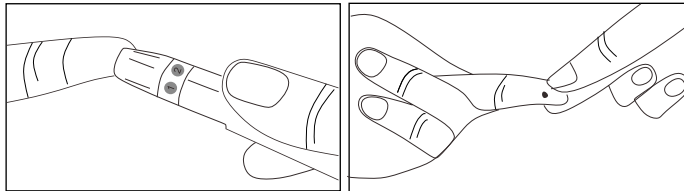
Instructions

1. Take one strip from the box and insert into the slot of the meter.



2. Use lancet device to get a blood drop.

3. Put your blood drop to the Reaction Area on the strip and read the result from the LCD display.



LCD Display messages

LO	Blood sugar is lower than 20 mg/dL (1.1 mmol/L).	Er2	Meter internal check error.
-----------	--	------------	-----------------------------

H1	Blood sugar is higher than 600 mg/dL (33.3 mmol/L).	LO <small>🔋</small>	Low battery.
-----------	---	-------------------------------	--------------

Er1 <small>🔋</small>	Used strip.	H1 <small>🌡️</small>	Operating temperature is above 40°C.
--------------------------------	-------------	--------------------------------	--------------------------------------

The result flashes three times if your result is equal or higher than 240 mg/dL (13.3 mmol/L).	LO <small>🌡️</small>	Operating temperature is below 10°C.
--	--------------------------------	--------------------------------------